

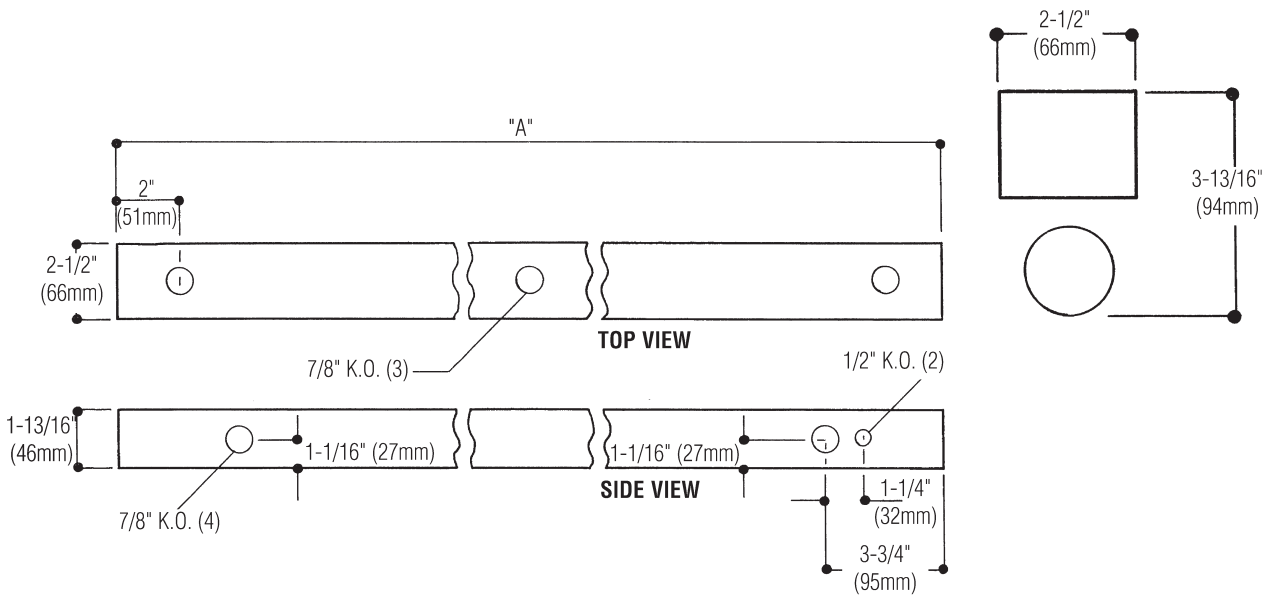
2 1/2" WIDE x 1 13/16" DEEP x 18", 24", 36", 48", 72", 96" LENGTHS, ONE LAMP, T8 OR T12

Features

- Fixtures suitable for individual, row, surface, or suspension mounting.
- Efficiency 94% (T8).
- Quarter turn latch secures channel cover for easy wireway access.
- Heavy duty channel of code gauge die formed steel.
- Only 2-1/2" wide.
- Fully enclosed wiring.
- U.L. Listed snap-on end caps.
- Combination end cap for continuous row mounting.
- Green grounding screw installed in channel.
- UL listed for direct mounting on low density ceilings and damp locations.



Dimensions



DIMENSIONS		
"A"		
Channel Length	Inches	(mm)
18" Channel	18"	(457 mm)
2' Channel	24"	(610 mm)
3' Channel	36"	(914 mm)
4' Channel	48"	(1219 mm)
6' Channel	72"	(1829 mm)
8' Channel	96"	(2438 mm)

Job Information	Type:
Job Name:	
Cat. No.:	
Lamp(s):	
Volts/Ballast:	

Lightolier a Genlyte Thomas Company www.lightolier.com
Technical Information: (978) 657-7600 • Fax (978) 658-0595
631 Airport Road, Fall River, MA 02720 • (508) 679-8131 • Fax (508) 674-4710
We reserve the right to change details of design, materials and finish.
© 2002 Genlyte Thomas Group LLC (Lightolier Division)
A0902 **SECTION 3A/Folio H110-40**

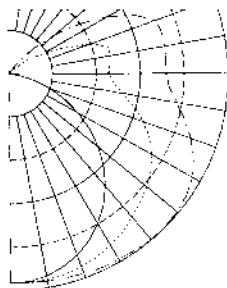
LIGHTOLIER 



2 1/2" WIDE x 1 13/16" DEEP x 18", 24", 36", 48", 72", 96" LENGTHS, ONE LAMP, T8 OR T12

PHOTOMETRY

REPORT NO: G14444
CATALOG NO:
SN4S132HPF120SO
LAMP TYPE: F32 / T8
LUMENS PER LAMP: 2900
TOTAL EFFICIENCY: 94%
CIE TYPE: SEMI-DIRECT
SPACING CRITERIA: 1.6
SHIELDING ANGLE: 180



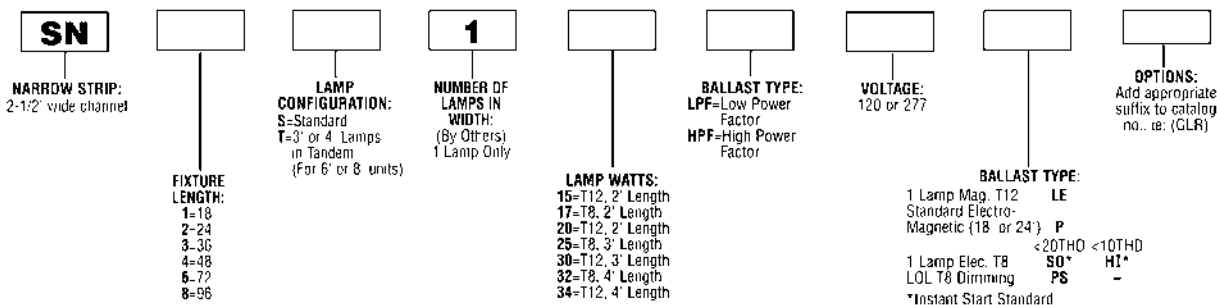
LER = FS - 66.7 Watts - 36 BF - 0.88

Comparative yearly lighting energy cost per 1000 lumens = \$3.29

coefficients of utilization — zonal cavity method

RF	20	20	20	20	20	20	20	20	20
RC	80	80	80	80	80	80	80	80	80
RW	70	50	30	50	30	10	50	30	10
room cavity ratio	1	2	3	4	5	6	7	8	9
	94	88	83	75	72	68	68	65	62
	84	75	67	64	58	53	57	53	49
	76	65	56	55	49	43	50	44	40
	69	56	47	48	41	36	43	38	33
	63	50	41	43	36	30	39	33	28
	58	45	36	38	31	26	35	29	24
	53	40	31	35	28	23	31	26	21
	50	36	28	32	25	20	29	23	19
	46	33	25	29	22	18	26	21	17
	43	30	23	27	20	16	24	19	15

ORDERING INFORMATION Explanation of Catalog Number Example: SN4S130LPF120SOGLR



Other dimming options. Consult factory.

OPTIONS/ACCESSORIES

FUSING: Internal fast-blow fusing.
SUFFIX: **GLR**.
Internal slow-blow fusing.
SUFFIX: **GMF**.

RADIO INTERFERENCE FILTER: 120 or 277 volt, 50 or 60 Hz. One per fixture is standard. SUFFIX: **RF**.

FLUORESCENT EMERGENCY LIGHTING SYSTEM: Factory-installed emergency power battery pack with charger and inverter. SUFFIX: **EM**.

STEM AND CANOPY SETS: Suspends fixture 6", 12", 18" or 24" from surface. (Four per fixture is recommended.) Catalog Number: **ASC6 CSP** (6"), **ASC12 CSP** (12"), **ASC18 CSP** (18"), **ASC24 CSP** (24")

CANOPY SPACER: Suspends fixture 1-1/2" from surface. Order Catalog

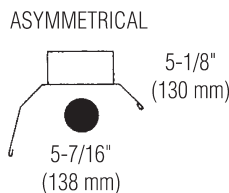
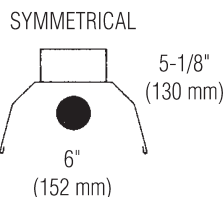
Number: **AC1 CSP**

GROUNDING CONVENIENCE OUTLET: 120 volt only. SUFFIX: **CO**.

4" WIRE GUARD: Catalog Number: **AWG1W CSP**.

REFLECTORS: Order Catalog Number:

SYMMETRICAL: **NSYMC20 CSP (24")**
NSYMC30 CSP (36")
NSYMC40 CSP (48")
ASYMMETRICAL: **NASYC20 CSP (24")**
NASYC30 CSP (36")
NASYC40 CSP (48")



SPECIFICATIONS

MATERIALS: Chassis parts are die-formed heavy gauge cold rolled steel, 1-13/16" deep x 2-1/2" channel width.

BALLAST COVER: Code gauge steel secured with 1/4" turn fasteners.

FINISH: Chassis exterior phosphate undercoating, baked white polyester enamel.

ELECTRICAL: Thermally protected class "P" ballast C.B.M. approved, non-PCB. If K.O. is within 3" of ballast, use wire suitable for at least 90°.

LABELS: I.B.E.W./UL and ULc Listed.

Job Information

Type:

Lightolier a Genlyte Thomas Company

www.lightolier.com

Technical Information: (978) 657-7600 • Fax (978) 658-0595

631 Airport Road, Fall River, MA 02720 • (508) 679-8131 • Fax (508) 674-4710

We reserve the right to change details of design, materials and finish.

© 2002 Genlyte Thomas Group LLC (Lightolier Division)

A0902

SECTION 3A/Folio H110-40

LIGHTOLIER®